

CAUTION

INSTALLATION IS THE CUSTOMER'S RESPONSIBILITY. SHIMS OR CHOKING COMPOUND IS REQUIRED BETWEEN THE EQUIPMENT FOUNDATION AND DECK FOR PROPER EQUIPMENT ALIGNMENT. FAILURE TO ALIGN PROPERLY WILL AFFECT EQUIPMENT LIFE AND PERFORMANCE VOIDING MANUFACTURER'S WARRANTY.

PERFORMANCE

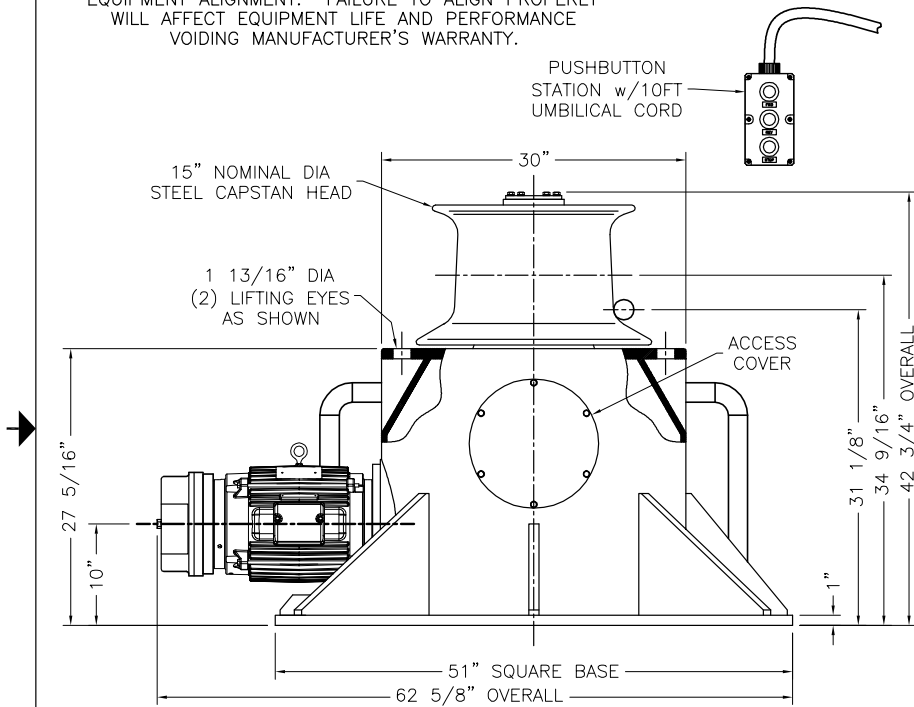
7,800 LBS LINE PULL AT 100% MOTOR LOAD
11,700 LBS LINE PULL AT 150% MOTOR LOAD

BOLLARD RATING

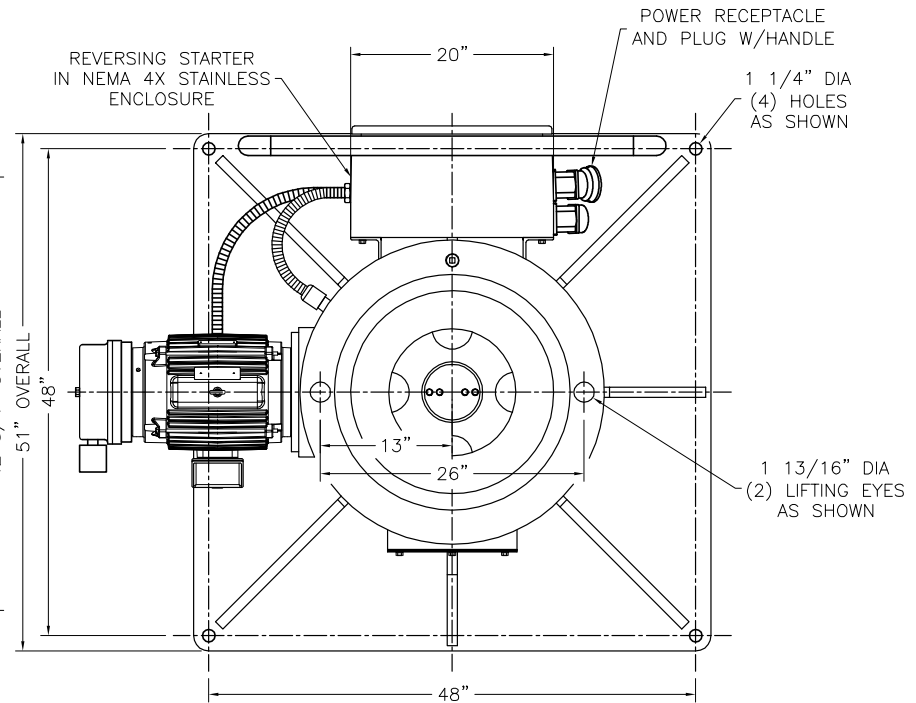
35,000 LBS
AT MID-POINT OF CAPSTAN HEAD

ELECTRICAL REQUIREMENTS

10 HP, 480V, 3PH, 60 Hz
120V MOTOR & BRAKE HEATERS



FRONT VIEW



TOP VIEW

NOTE(S):

1. PERFORMANCE FIGURES ARE NOMINAL.
2. MOUNTING HARDWARE TO BE CUSTOMER SUPPLIED TO WITHSTAND: AXIAL: 19,750 LBS; SHEAR: 12,750 LBS.

REVISIONS			
REV	DRAWN	DATE	DESCRIPTION
1	JWS	5/29/13	ADDED SHT 2 AND ADDITIONAL VIEWS PER CUSTOMER REQUEST
2	JTD	7/09/13	LOCATED STARTER & PROTECTION PER CUSTOMER REQUEST

DRAWN: JWS
CHECKED: MJB
APPROVED: JTD

UNLESS OTHERWISE SPECIFIED: ALL DIMENSIONS ARE IN INCHES

TOLERANCES:
FRACTIONS - ± 1/16"
X.X - ±.062
X.XX - ±.015
X.XXX - ±.005
DEGREES - ± 1/2"
MACHINE FINISH: 250 μ IN

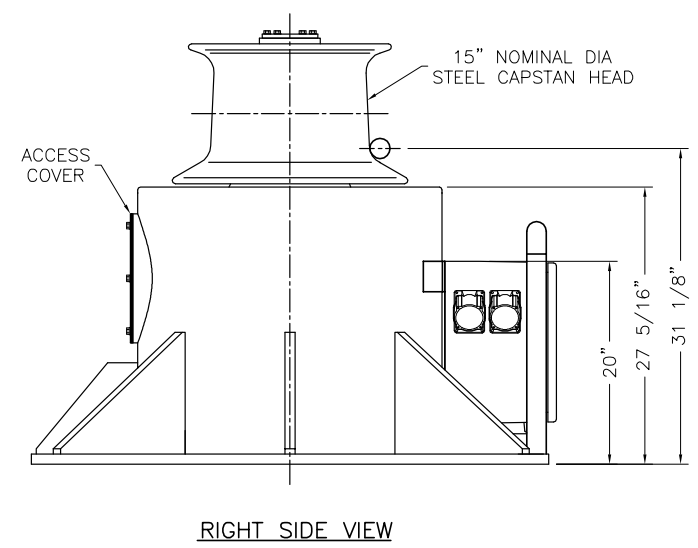
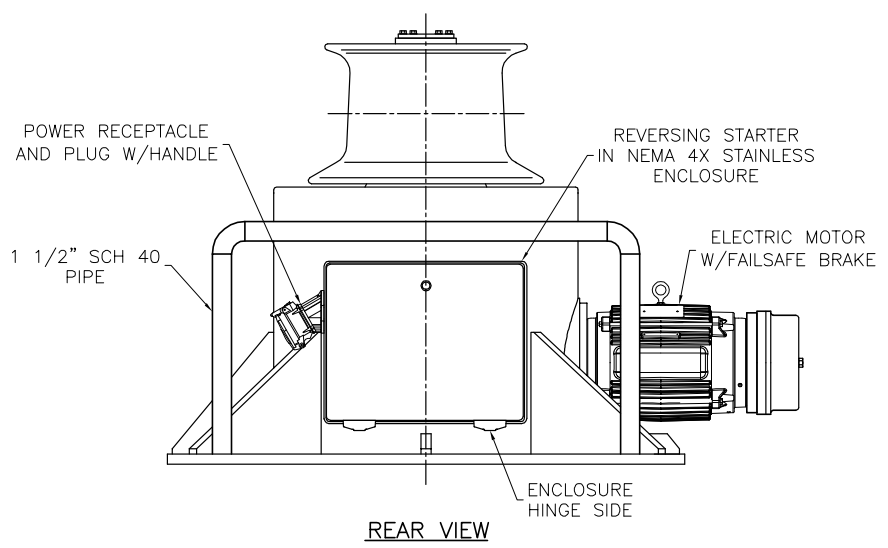
THIS DOCUMENT IS THE SOLE PROPERTY OF COASTAL MARINE EQUIPMENT, INC. AND CONTAINS CONFIDENTIAL AND PROPRIETARY INFORMATION. NO REPRODUCTION OR DISCLOSURE TO THIRD PARTIES, OR OTHER USE OF THIS DOCUMENT IS PERMITTED WITHOUT THE EXPRESS WRITTEN CONSENT OF COASTAL MARINE EQUIPMENT, INC.

COASTAL MARINE EQUIPMENT, INC.
20995 COASTAL PARKWAY • GULFPORT, MS 39503-9517

GENERAL ARRANGEMENT
C6.9-3.5-51-131

CAGE NUMBER 30600

SIZE	SHEET 1 OF 2	DWG NO./PART NO.	REV
B	DATE: 5/24/13	550512	2
SCALE: N/A	WEIGHT: -	NEXT ASSEMBLY: -	



DRAWN: JWS	UNLESS OTHERWISE SPECIFIED: ALL DIMENSIONS ARE IN INCHES	CAGE NUMBER 30800	COASTAL MARINE EQUIPMENT, Inc. 20995 COASTAL PARKWAY • GULFPORT, MS 39503-9517		
CHECKED: MJB	TOLERANCES: FRACTIONS - ± 1/16" X.X - ±.062 X.XX - ±.015 X.XXX - ±.005 DEGREES - ± 1/2" MACHINE FINISH: 250 μ IN		GENERAL ARRANGEMENT C6.9-3.5-51-131		
APPROVED: JTD	THIS DOCUMENT IS THE SOLE PROPERTY OF COASTAL MARINE EQUIPMENT, INC. AND CONTAINS CONFIDENTIAL AND PROPRIETARY INFORMATION. NO REPRODUCTION, DISCLOSURE TO THIRD PARTIES, OR OTHER USE OF THIS DOCUMENT IS PERMITTED WITHOUT THE EXPRESS WRITTEN CONSENT OF COASTAL MARINE EQUIPMENT, INC.		SIZE B	SHEET 2 OF 2 DATE: 5/24/13	DWG NO./PART NO. 550512
		SCALE: N/A	WEIGHT: -	REV 2	
		NEXT ASSEMBLY: -			