

realtime.sikuliaq.alaska.edu/realtime/map/...

Not Secure realtime.sikuliaq.alaska.edu/realti...

**Cruise:** SKQ202014S  
**lon:** -166.220062583  
**lat:** 69.721365717  
**heading:** 308.34  
**cog:** 308.28  
**sog:** 9.4 knt  
**Sun, 08 Nov 2020 15:11:32 GMT**

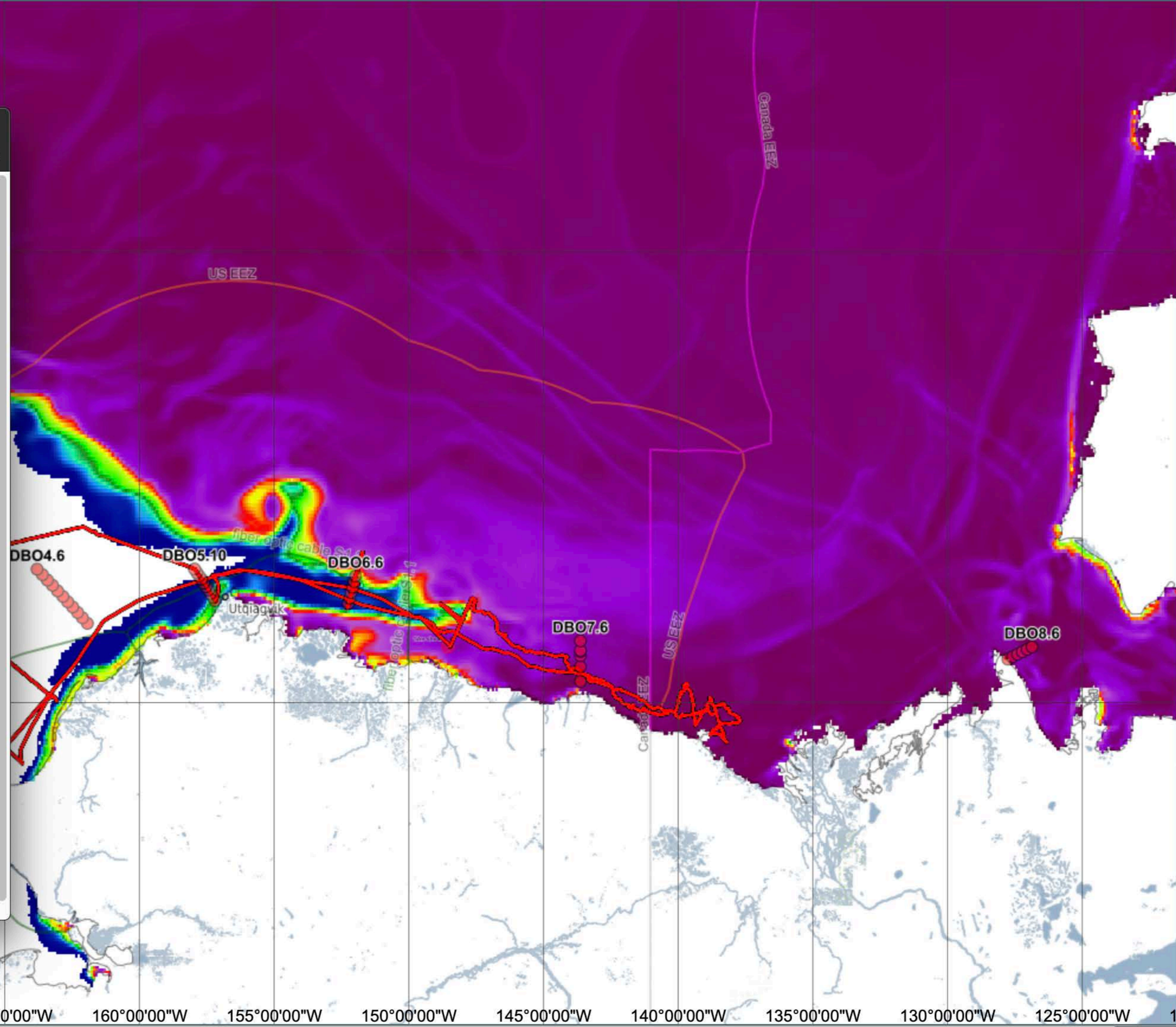
# GOFS Sea Ice Concentration Model

## Legend

sea\_ice\_concentration

- 1%
- 10%
- 20%
- 30%
- 40%
- 50%
- 60%
- 70%
- 80%
- 85%
- 90%
- 96%
- 100%

Global Ocean Forecasting System (GOFS) model. This model is run by Navy's Fleet Numerical (FNMOC). Sea ice physics in the model are controlled by Los Alamos' Community Ice Code (CICE). Data provided by the National Ice Center.



- NOAA Raster Charts
- Sikuliaq
- Sikuliaq Underway Data([legend](#))
- Ship SST
- Ship Sal
- Ship Chlorophyl
- adcp
- Sikuliaq Navigation Routes
- GFS sfc wind speed([legend](#))
- WAVEWATCH III([legend](#))
- RTOFS ([NCEP Ocean Model](#))
- SST MUR([legend](#))
- SST MW([legend](#))
- SST IR ([NASA Ocean Color](#))
- Chlorophyll ([NASA Ocean Color](#))
- MODIS Daily([Visible TrueColor, 250m](#))
- VIIRS,MODIS Realtime([Vis,IR ~300m](#))
- NIC MIZ ([info](#))
- NWS Analysis ([legend](#))
- GOFS Ice Drift([legend](#))
- GOFS Ice Concentration([legend](#))
- 20201107\_12z 00 hrs (20201107 12:00z)c
- 20201107\_12z 24 hrs (20201108 12:00z)c
- 20201107\_12z 48 hrs (20201109 12:00z)c
- 20201107\_12z 72 hrs (20201110 12:00z)c
- 20201107\_12z 96 hrs (20201111 12:00z)c
- GOFS Ice Thickness([legend](#))
- AMSR2 ([legend](#))
- ASCAT Sea Ice



Scale: 1:14M Zoom Level: 5 Cursor Location: 126° 23.699' W , 73° 9.902' N

Center Route Planner Update hide layers