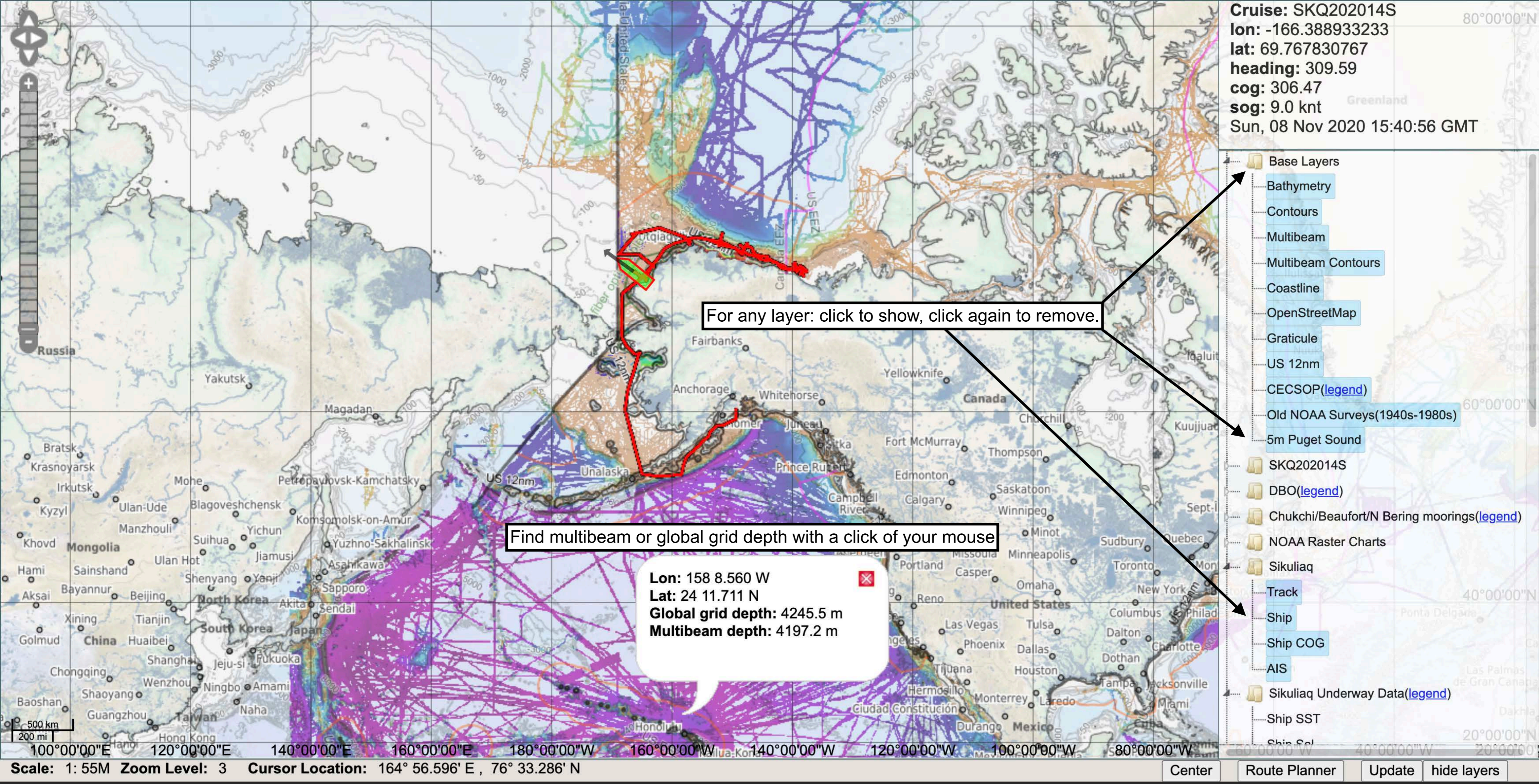


Cruise: SKQ202014S
lon: -166.388933233
lat: 69.767830767
heading: 309.59
cog: 306.47
sog: 9.0 knt
Sun, 08 Nov 2020 15:40:56 GMT



For any layer: click to show, click again to remove.

Find multibeam or global grid depth with a click of your mouse

Lon: 158 8.560 W
Lat: 24 11.711 N
Global grid depth: 4245.5 m
Multibeam depth: 4197.2 m

- Base Layers
- Bathymetry
- Contours
- Multibeam
- Multibeam Contours
- Coastline
- OpenStreetMap
- Graticule
- US 12nm
- CECSOP(legend)
- Old NOAA Surveys(1940s-1980s)
- 5m Puget Sound
- SKQ202014S
- DBO(legend)
- Chukchi/Beaufort/N Bering moorings(legend)
- NOAA Raster Charts
- Sikuliaq
- Track
- Ship
- Ship COG
- AIS
- Sikuliaq Underway Data(legend)
- Ship SST
- Ship Sel