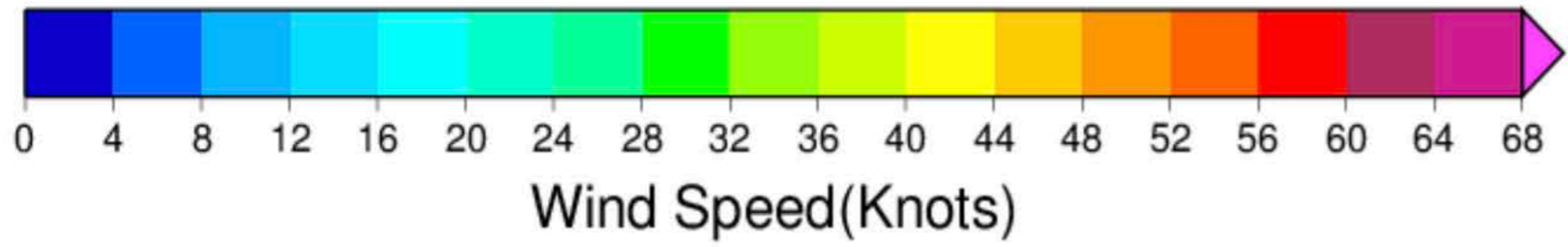


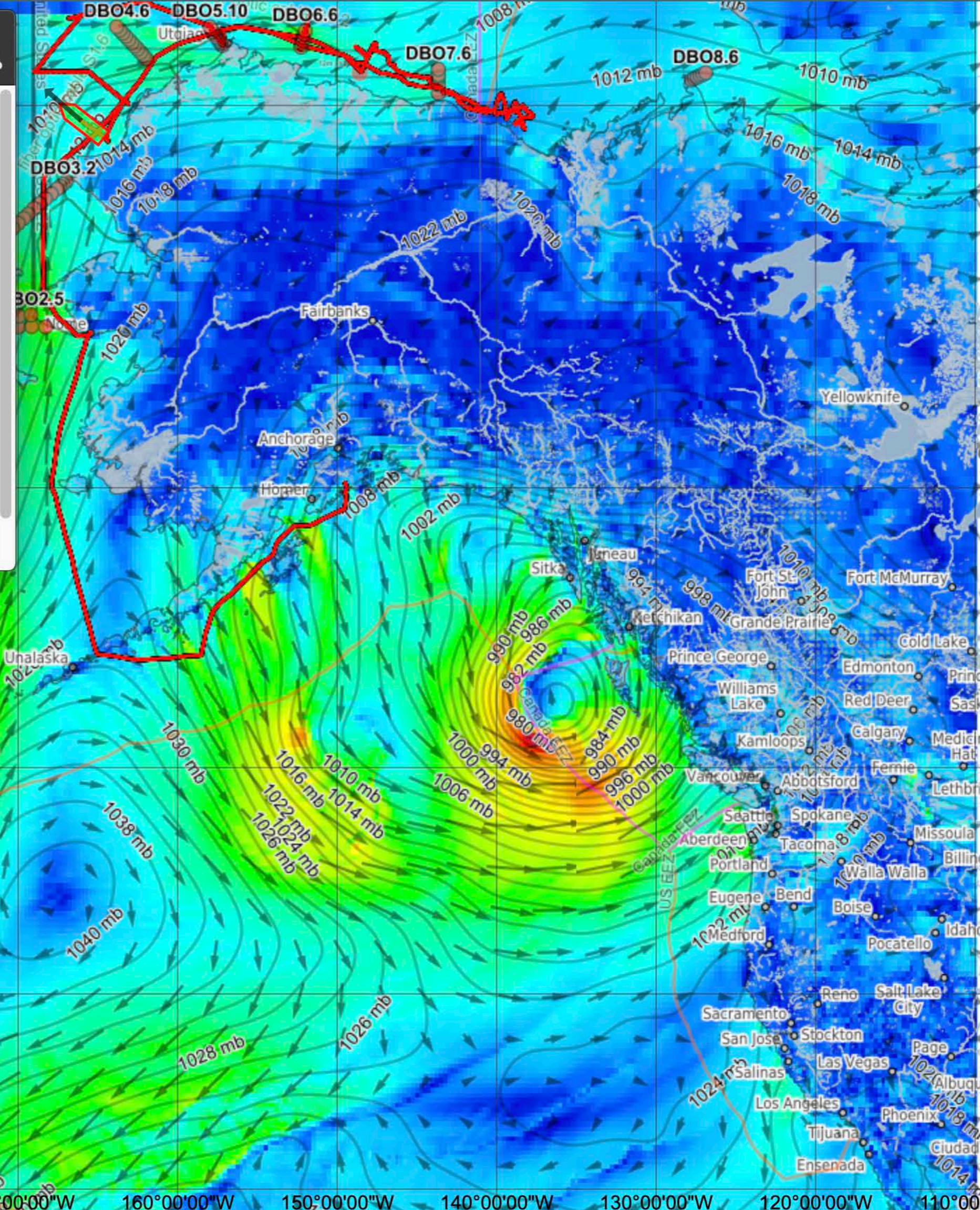
Global Forecast System (GFS) Model



GFS - Global longitude-latitude grid, 0.25 degree resolution. Wind measured at a standard height of 10 meters above the ground derived from the model parameters ugrd10m(10 m above ground u-component of wind) and vgrd10m(10 m above ground v-component of wind). Pressure using model parameter prmslmsl(mean sea level pressure reduced to msl) converted to MB.

Note: Model runs are every 6 hours at 00Z, 06Z, 12Z and 18Z daily. Each model run is typically available after a ~5 hour delay. So, for example, the 00Z model run would become available a little after 05Z, the 06Z run a little after 11Z and so on. This is of course assuming the internet is working.

Cruise: SKQ202014S
 lon: -166.025757933
 lat: 69.665931050
 heading: 308.81
 cog: 311.96
 sog: 9.5 knt
 Sun, 08 Nov 2020 14:15:35 GMT



- GFS sfc wind speed(legend)
- 20201103_12z 00 hrs (20201103 12:00z)
- 20201103_12z 06 hrs (20201103 18:00z)
- 20201103_12z 12 hrs (20201104 00:00z)
- 20201103_12z 18 hrs (20201104 06:00z)
- 20201103_12z 24 hrs (20201104 12:00z)
- 20201103_12z 30 hrs (20201104 18:00z)
- 20201103_12z 36 hrs (20201105 00:00z)
- 20201103_12z 42 hrs (20201105 06:00z)
- 20201103_12z 48 hrs (20201105 12:00z)
- WAVEWATCH III(legend)
- RTOFS (NCEP Ocean Model)
- SST MUR(legend)
- SST MW(legend)
- SST IR (NASA Ocean Color)
- Chlorophyll (NASA Ocean Color)
- MODIS Daily(Visible TrueColor, 250m)
- VIIRS,MODIS Realtime(Vis,IR ~300m)
- NIC MIZ (Info)
- NWS Analysis (legend)
- GOFS Ice Drift(legend)
- GOFS Ice Concentration(legend)
- GOFS Ice Thickness(legend)
- AMSR2 (legend)
- ASCAT Sea Ice
- Sentinel-1A Plan
- Sentinel-1B Plan
- rs2_plan_October2020
- rs2_plan_Nov2020

